

Short introduction for MetaStock (30-day full version)

Dear MetaStock tester,

Thank you for your interest in the MetaStock product family. To make your first steps with MetaStock more comfortable, we offer you this short introduction to our software.

Have a lot of fun with our software, and please do not hesitate to contact us for any upcoming questions.

Kind regards,

Your Sharework Team

MetaStock- the installation

For the installation select the default possibilities.

Both versions have their own specific features:

MetaStock 10.1 End-of-Day Version

This version will be installed with sample data automatically, which can be found in the folder C:\MetaStock Data\Sample. If you want to use current data for free and without obligation, please contact us: info@sharework.de.

MetaStock Professional (Realtime) 10.1 for eSignal

This version requires an eSignal-datafeed, but it can be connected also to other data suppliers (e.g. Tenfore, TaiPan, Interactive Brokers, DTN IQ feed, Quote.com...). For more information on how to connect these alternative data vendors, please contact us: info@sharework.de.

MetaStock Professional (Realtime) 10.1 for QuoteCenter (recommended)

This version requires a data subscription to QuoteCenter (powered by Reuters). QuoteCenter is the recommended data vendor for MetaStock Professional. You will be enabled to use QuoteCenter data during your trial period of MetaStock Professional for QuoteCenter. Please contact us for setting up your data subscription: info@sharework.de.

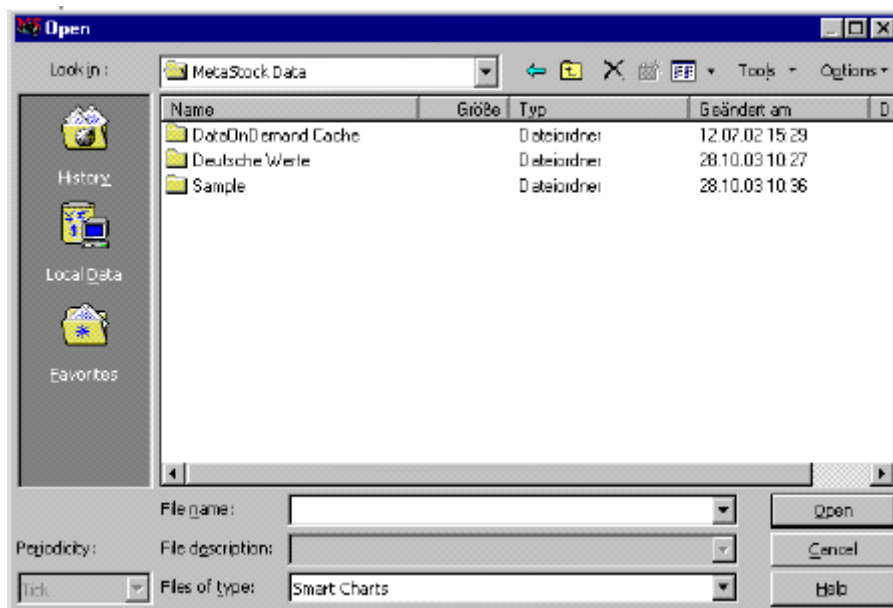
After you have installed MetaStock (Professional) successfully, you can take the first tour through MetaStock. Here are some features:

MetaStock-The Chart-window (all versions)

First we want to deal with the settings of charts. Therefore we will open a chart from the sample folder:

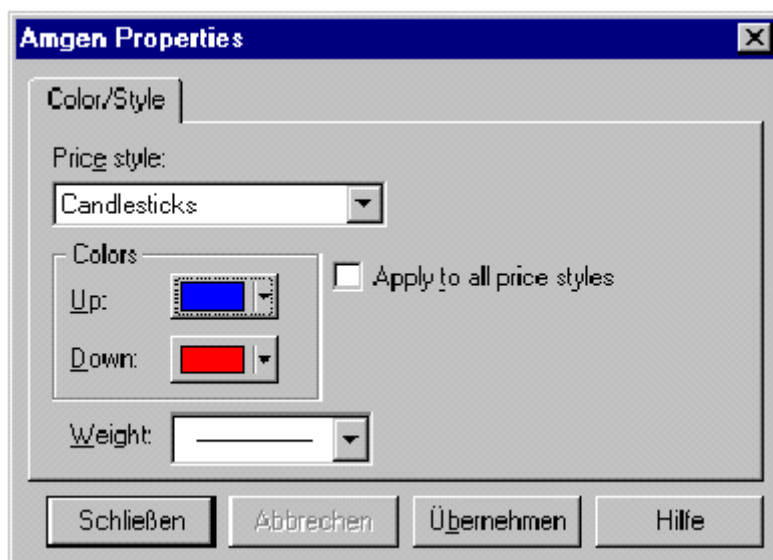
„File“ → open

In the opening window choose the folder Metastock Data / **Sample**.

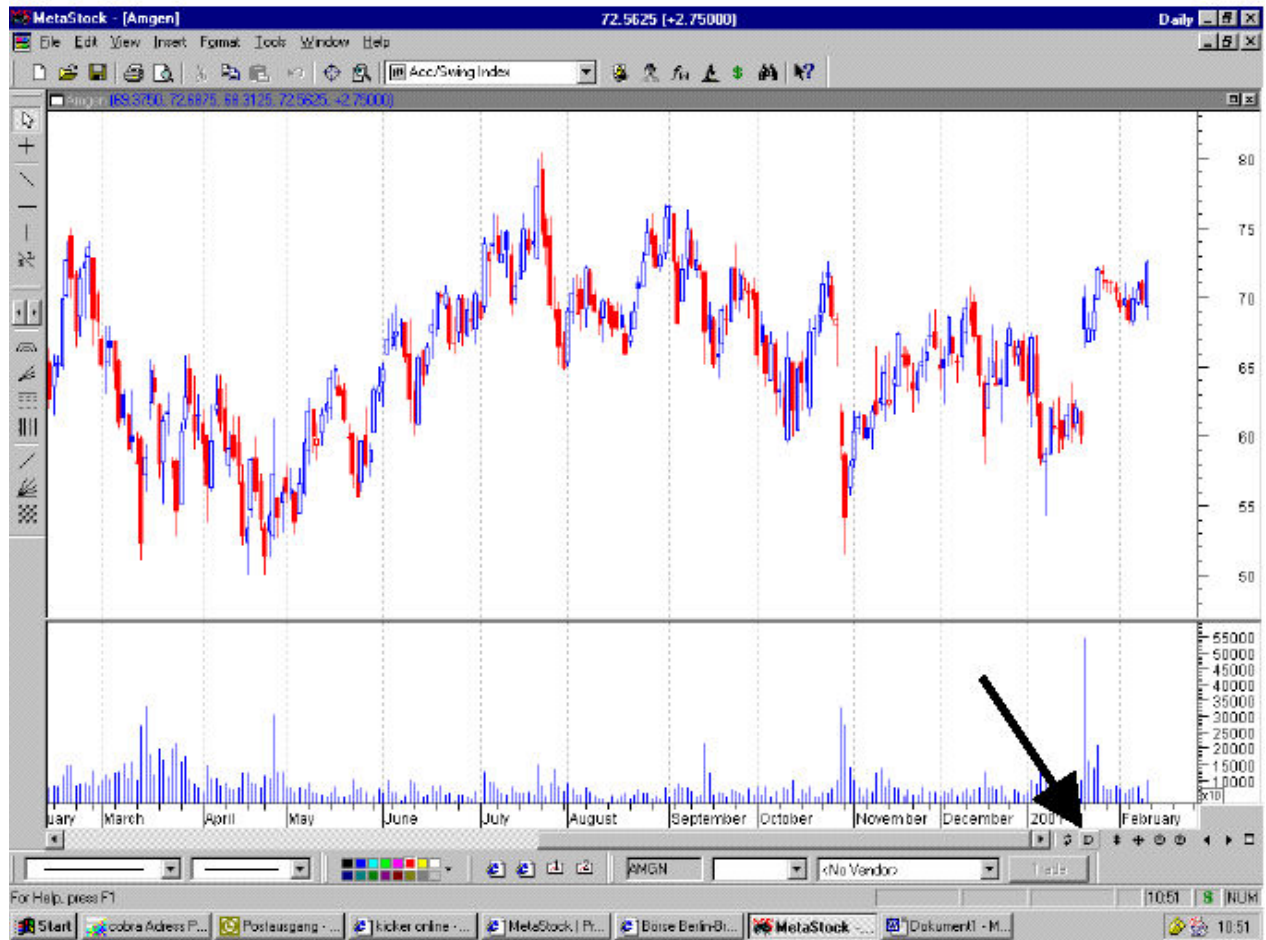


In this folder select the stock of **Amgen** via double click. A window opens with the Amgen chart. Now right-click on the chart.

In the upcoming window click "**Amgen Properties**". Once more a window opens up. Choose following setting:



Confirm with "apply" and "close". Now the Chart should look like this:



In the right lower area of the window you can change settings of the chart. For example the periodicity of the chart: daily, weekly or yearly chart (in the Professional version also Intraday: 1 min, 5 min, etc.).

MetaStock – the different modules

„The Explorer“: With the Explorer you can filter/scan your portfolio or parts of it. Either use an included condition in the Explorer or create your own filters.

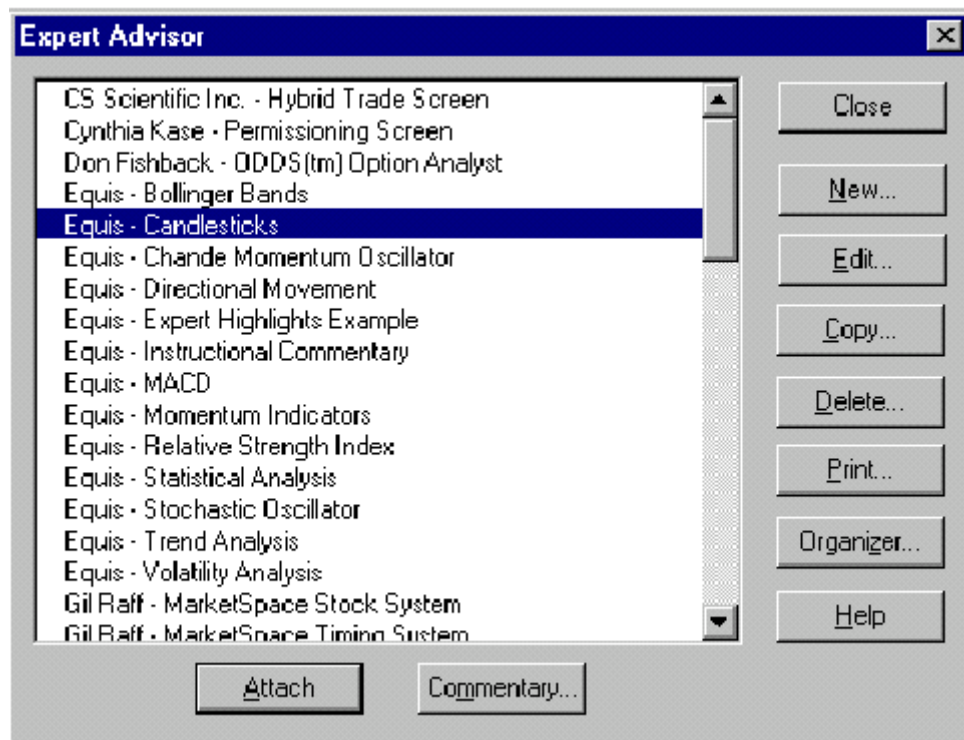
„Enhanced System Tester“: Test your trading systems and have a look at the performance. You can create your own system tests here.

„Indicator Builder“: Offers the possibility to create your own indicators, which can be used in other modules, e.g. the “Enhanced System Tester”.

„Expert Advisor“: It notifies you whenever a trading signal is generated.

We will have a closer look at the " Expert Advisor" now:
We want to add some buy and sales signals.

Choose the button "Expert Advisor", click "Equis - Candlesticks" and activate the process with "Attach".



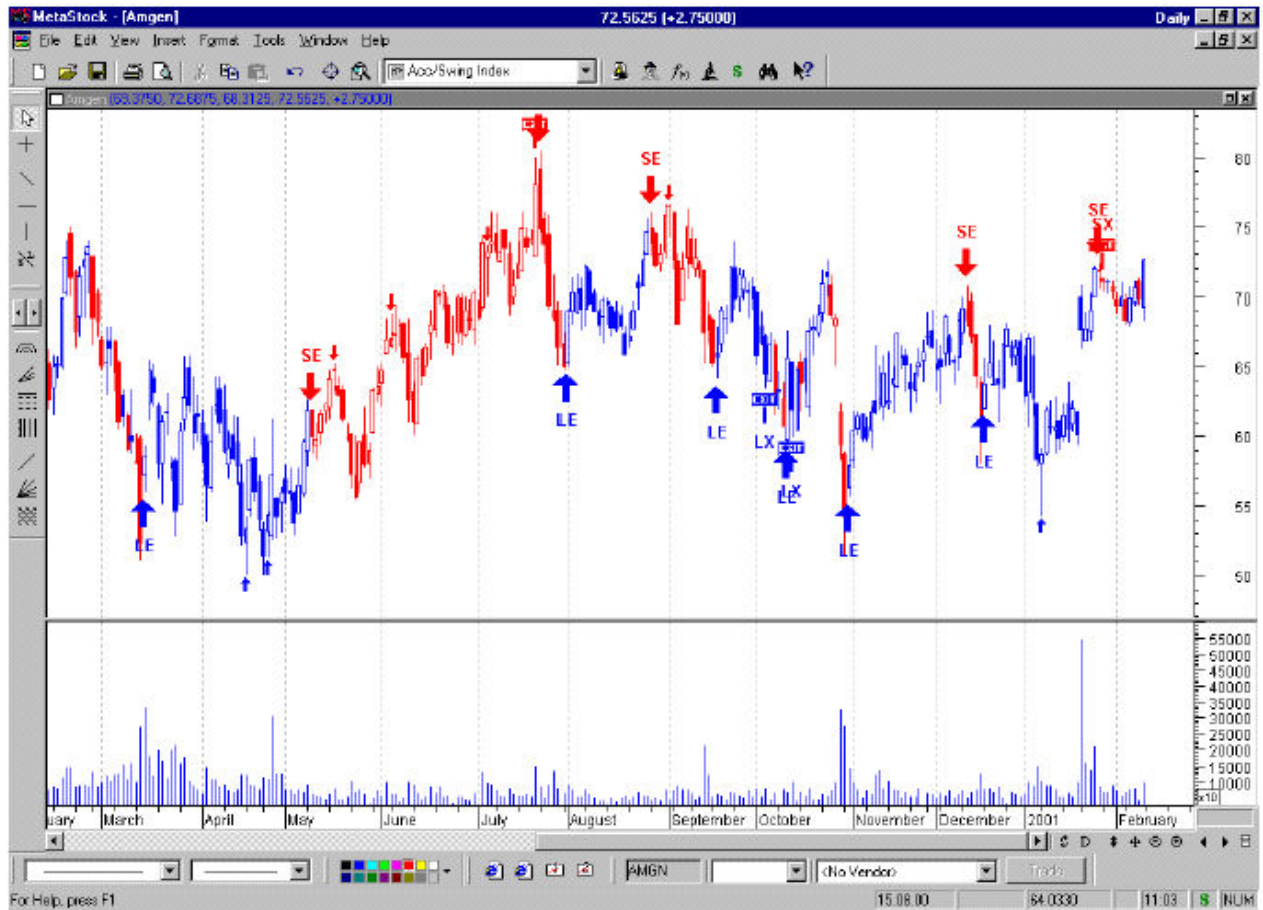
Close the window and you should receive the following chart:



Now you can see buy and sell signals drawn in the chart on the basis of the Expert Advisor's Candlestick signals.

In order to change to another system, we open up the "Expert Advisor" once more, choosing "Candlestick", this time "Detach", select another one, e.g. „pp:: Bollinger Bands (modified)“, click „Attach“ and close the window.

Now the Chart should look like this:



The LE (Long Entry Signals) and the SE (Short Entry Signals) are shown.

This short introduction can only give you a first insight into MetaStock, of course. Now it is your turn to discover the functionality of MetaStock (Professional) within your 30 day trial period.

For further questions please contact us: info@sharework.de.

Kind regards,

Your Sharework Team